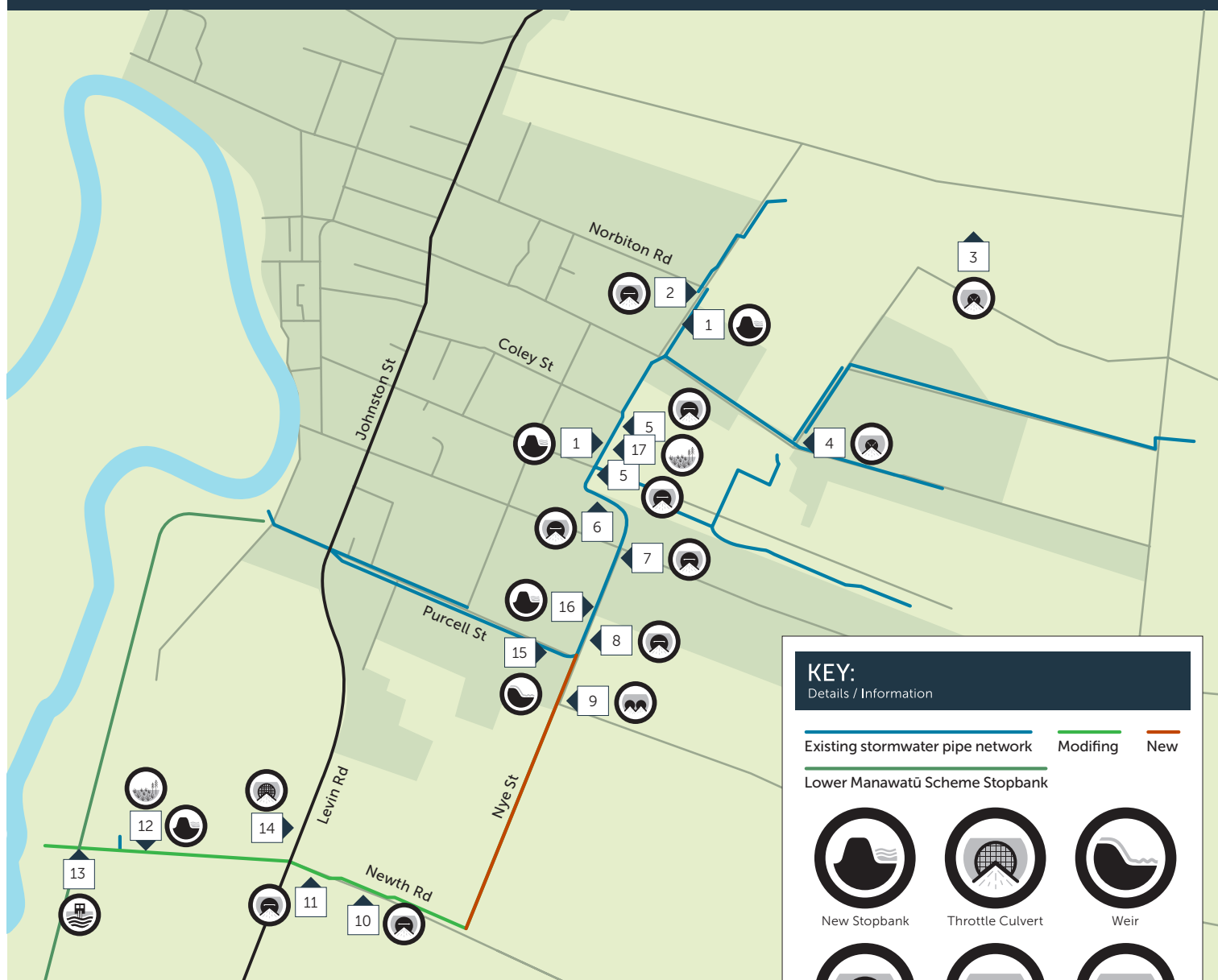


Foxton East Drainage System Issues and Options



- | | |
|--|---|
| 1 Construct proper stopbank with sheet piled foundation to prevent piping failure; | 9 Twin culverts to divert flow to Duck Creek; |
| 2 Culverts under Spring Street and Avenue Road enlarged; | 10 Enlarge culvert beneath Newth Road; |
| 3 Reduce culvert size and form floodwater detention area; | 11 Enlarge culvert beneath Newth Road; |
| 4 Baker Street culvert reduced in size; | 12 Localised stopbanking and wetland construction; |
| 5 Coley and Cook Street culverts to be enlarged; | 13 New pumpstation; |
| 6 Culvert enlarged; | 14 Throttle culvert beneath SH1; |
| 7 Culvert enlarged; | 15 High level weir controlling spill to Purcell Street drain; |
| 8 Culvert enlarged; | 16 Form stopbank to contain flow within Kings Canal; |
| | 17 Construct wetland. |

KEY:

Details / Information

Existing stormwater pipe network

Modifying

New

Lower Manawatu Scheme Stopbank



New Stopbank



Throttle Culvert



Weir



Enlarge Culvert



Reduced Culvert



Twin Culverts



Detention Dam

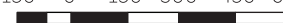


Wetland Construction



Pump Station

150 0 150 300 450 600 m



Map Projection: Transverse Mercator
Horizontal Datum: NZGD 2000
Grid: NZGD 2000 New Zealand Transverse Mercator



For more information visit www.horizons.govt.nz
or freephone Horizons on 0508 800 800